



Vivid in the Mallee Region 2025

Creating a community
where people of all
abilities thrive.



About Us

At Vivid, we believe that providing quality disability support is about listening, understanding and ultimately assisting people to achieve their goals. We are dedicated to providing tailored support based on individual needs.

With sites at Echuca, Kyabram, Swan Hill and Kerang, Vivid provides opportunities and support across a wide region of Northern Victoria. Our values underpin everything that we do. They are:

- Growth;
- Innovation;
- Respect & Integrity
- Teamwork
- Fun!

Vivid has a strong history in the Mallee region. Since the early 1960s we have been providing support to people with disability, working closely with local families and the wider community.



Vivid & the NDIS

Vivid is a registered NDIS provider and ready to help you with your NDIS plan.

In this booklet you can discover the ways that Vivid can support you and help you achieve your goals. Ensuring that these supports are part of your NDIS plan is important.

Vivid is here to help you get the most out of your NDIS plan.

What We Do

Vivid provides a range of care, support and pathways for over 250 adults with disability. Support plans are flexible and suit individual needs. Our staff will work with you to help you achieve your goals and in some cases we can provide transport for people living in rural or remote areas.

We have divided our services up into four key areas. They are:





Vivid Living

- Group Based Programs
- Flexible Support
- Access All Areas



Group Based Programs

Vivid Living's Group Based Programs give you choice and control about the life you want to live. Our program choices are designed to help you achieve your NDIS goals while providing positive experiences for you in the community. We will work with you to maximise your potential and provide opportunities based on your individual needs.

Programs are structured around key themes:

- Life Skills
- Healthy Living
- Adventure & Recreation
- Gardening and Environment
- Culture and the Arts
- Communication & Technology
- Work Experience

Vivid has a range of specific programs that fit into these key themes and individual timetables are created based on your choices.

Programs run between 9.30am to 3.30pm Monday to Friday in Swan Hill and Kerang. Contact Vivid to find out more about the program choices available to you.

Vivid's Break Buddies program offered over the Christmas and New Year breaks allows you to access your community in organised activities and outings. You get to hang out with your friends, visit local attractions and have a load of fun at the same time!

LIFE SKILLS

.....

Everyday living skills -
Accessing the community through
the use of public transport,
participating in community and social
events, cooking and money
management.



WORK SKILLS

.....

Build upon home
maintenance and work
skills with activities including
gardening, home tools & appliance
handling, vehicle maintenance, wood
work and cleaning.



COMMUNICATION & TECHNOLOGY

.....

Learn how to use technology in
different forms of communication.
Enhance skills through producing
newsletters and photography.

CULTURE & ARTS

.....

Express yourself in specialised
art forms including basic sign
language, music, dance, art & craft.
This program develops fine motor skills
and enhances independence,
imagination and confidence.

ADVENTURE & RECREATION

.....

Being part of the community,
attending fun activities and
community events as chosen by
Participants. New experiences and
socialising with peers.



HEALTHY LIVING

.....

Discovering the many
opportunities to improve overall health
and wellbeing - yoga, swimming,
healthy eating, relaxation and so much
more.



UPBIKCYCLE BIKE RESTORATION PROGRAM

.....

Learn skills in disassembling and
reassembling bikes, safe use of tools,
replacing bike parts, recycling and
sorting materials.



Flexible Support

With the overall aim of enhancing independence, confidence, self-esteem and life choices, Vivid is committed to providing support that suits the needs of each individual we work with. This means that support can be delivered at any Vivid site, within the community, at home or in a group.

Flexible Support could also be enjoying that long awaited holiday!



Access All Areas

Vivid's Access All Areas (AAA) activities are a lot of fun. Come along and enjoy a night of pizza and pool a weekend outing in our local area or maybe travel further taking a trip to the Royal Melbourne Show or AFL.

AAA and Break Buddies can be included in your NDIS plan and activity fees are charged separately.





Reebok

mpic

FORD

AMP

SHIDE

AMP

SHIDE

HUB

- HUB Seed to Plate



Seed to Plate

Seed to Plate is Vivid's original HUB program. Participants learn all about growing fresh produce in our very own garden.

Caring and tending to the garden is a significant component of the Seed to Plate program and is the base for cooking and sharing delicious and healthy meals together.



Vivid Employment

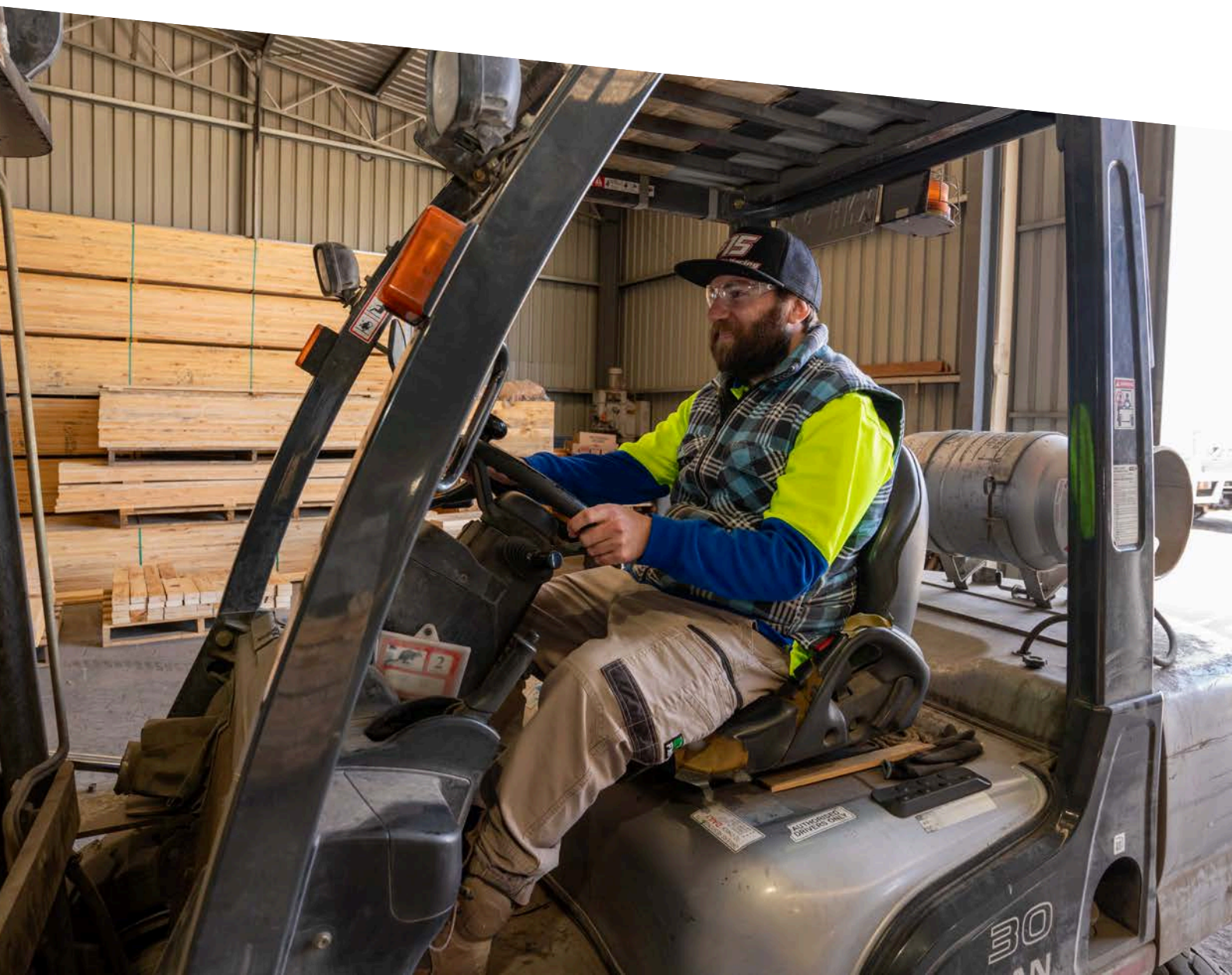
- Supported Employment
- School Leaver Employment Supports (SLES)
- Supports in Employment



Supported Employment

Vivid Work Crew is an Australian Disability Enterprise that offers paid, meaningful employment in a supported environment. Vivid has three 'Crews' – Echuca, Swan Hill and Kerang. Each site and crew is unique, partnering with local businesses to get the job done!

Vivid Work Crew is made up of a team of Supported Employees and Support Workers. With the overall goal of building capacity, learning new skills and challenging ourselves. Vivid Work Crew is a vibrant and fun employment setting.



School Leaver Employment Supports (SLES)

If you're a school leaver and would like to make the transition into the workforce, then SLES (School Leaver Employment Supports) is a new supportive service available as part of the NDIS.

SLES offers you individualised support for up to two years to help get you ready for work and plan your pathway to employment. Your SLES plan will be tailored to meet your individual employment goal within our Vivid Work Crew sites.

SLES will help to build your skills and confidence; learn about money, travel and time management and connect you with a supportive team.

SLES builds skills and confidence; learn about money, travel and time management and connect you with a supportive team.



Supports in Employment

The path between supported employment and open employment can often feel like a big leap! Vivid Employment are excited about their partnerships with businesses that make this transition as smooth as possible.

Supports in Employment provides flexible and tailored on the job support to people with a disability who are employed directly by a local business.

Contact us to discuss how we can support you in your employment journey.



Vivid Learning

Learners can choose from a range of courses including cooking, photography and digital literacy.

These courses are offered outside regular day program and work hours so we can welcome participants across all of our service steams.

You're going to have a lot of fun with friends and you'll be recognised for your efforts with a Course certificate.

The availability of each course depends on interest and enrolments. Be sure to tell us if you are interested in one of the courses.



Support Coordination

Having a choice of providers (people who assist you with day to day living supports) is important in making sure that you get the support you need, how and when you need it.

A Support Coordinator will assist you with making appointments and connecting with providers.

Support Coordination provides assistance to strengthen your ability to organise and choose the support you need to participate fully in life and in the community.

Support Coordination can assist you by:

- Exploring options and identifying the services that will meet your needs outlined in your NDIS Plan;
- Overseeing and coordinating services, providers and support;
- Communicating with Government, NDIA and agencies on your behalf;
- Coordinating the type and timing of supports, including Service Agreements;
- Directing you to the correct providers in relation to a query or concern;
- Enabling information sharing between service providers;
- Obtaining quotes for services;
- Linking you with your local community;
- Working with you to develop skills, capacity and resilience;
- Linking you with new service providers and your local community.



Contact Vivid

Administration & Support for
your NDIS Plan

Head Office
461-463 High Street Echuca VIC 3564
03 5480 6611
info@wearevivid.org.au

In Swan Hill

Vivid Living
2 Harrods Lane,
Swan Hill VIC 3585
03 5032 2170

In Kerang

Vivid Living & Work Crew
116 Scoresby Street,
Kerang VIC 3579
03 5450 3036

Vivid Work Crew

26 Shepherd Road,
Swan Hill VIC 3585
03 5033 2722



We are committed to
creating a community
where people of all
abilities thrive